

Friday Flyer

29th March 2024

Head Teacher Update

What a week! It may only have been 4 days long but we have packed everything we could into it! We've had trips around the North East, a performance at Northern Stage and some fantastic learning all about our North East heritage as part of Made in the North East Week.

I have to start this week's Friday / Thursday Flyer with news of our amazing Shakespearian cast who performed Julius Caesar at Northern Stage last night as part of the Coram Shakespeare Schools Festival. I was blown away, not only by the phenomenal talent on display, but also the sheer effort that had gone into rehearsals. Earlier in the year, children from Y5 and Y6 auditioned for roles and then committed to weekly rehearsals in preparation for last night's performance. And what a performance it was! For those who weren't there last night, imagine paired back, minimalist costumes, complex Shakespearian language, metre long sticks à la Stomp and incredibly talented children. Ponteland Primary opened the festival with the full cast stomping onto the stage to the beat of their sticks and from the very first stomp, they had the audience mesmerised. It took enormous courage for the children to perform on a live stage and particularly for Lizzie and Rose who stepped in with larger parts than originally anticipated. Originally sharing the huge role of Brutus with another child, Lizzie made a monumental effort to learn the full part three weeks ago when her co-actor was unable to take part. Sadly, one of our Y5 actors was poorly yesterday and so Rose volunteered to learn a new part on the very day of the performance! Such stars! I'd like to say a big thank you to Mrs Main and Mrs Maccoby who led rehearsals and directed the cast and Miss Mears and Mr Armstrong who supported them.





This week we have celebrated all things North East with our MITNE week. From trips to Beamish and Cragside, to an expedition on Newcastle's public transport, to the baking of local delicacies, we have learned about an array of North East history. It has been fantastic to see so much discussion in classes as the children have explored their heritage and have thoughtfully considered how our region has changed as well as what makes this area so special. They will hopefully be coming home to you tonight with a sense of pride about where they are from and a strong feeling of belonging.

Lastly, today we said goodbye to two members of staff. Mrs Pattinson, our school cook who is responsible for our delicious lunches, is retiring and we wish a very happy retirement. Today also marks Mrs Winskell's last day. Mrs Winskell has been at Ponteland Primary School for 23 years and she has seen the school through no less than three school moves! She will be greatly missed and we look forward to hearing about her next adventure.

I hope everyone has a wonderful break over the bank holiday and a lovely Easter or Eid-ul-Fitr to those who celebrate.

Best wishes

Claire Johnson



Safeguarding Update

Last Friday I attended safeguarding training and I was horrified by one of the slides which listed the content of an 18 certificate game. As we start the Easter holidays and children are likely to be spending more time playing online, I wanted to share the following information from my training with you:

18
www.csg.org.uk

What is on an 18 certificate game?

- Car high jacking
- Bondage acts
- Fetish acts
- Extreme crime such as muggings, murder
- Players acting out torture
- Full Sex scenes
- Prostitution
- Sex act performed on players
- Animals having sex
- Extreme violence
- Use of sex toys
- Strip clubs
- Setting a women alight after sex act
- Slitting throat of prostitute after sex act



Games are rated 18-years and over if there is a "gross" level of violence likely to make the viewer feel a sense of revulsion.

Message from our PTA

Well done to our Easter egg / bonnet winners, Ethan, Sebastian, Lily, Camilla, Aria, Noah, Orla, Mia-Lily, Amelie, James, Oscar, Finley, Lacey & Ella! It was so hard to judge as we had some Eggcellent entries! An honourable mention to Harper for her amazing Easter hair too!



Congratulations to Chloe and Heidi who have won our two fabulous Easter hampers! A huge thank you to the PTA who have organised these fundraisers to support school.





Do you want to change the world?

If so, please enter The Day's third Global Young Journalist Awards!

The competition is FREE to enter for 7-18-year-olds worldwide.

Entries can be submitted in a variety of media formats including **written articles, photography, illustration, podcast, video and graphic design.**

Plus, with 10 entry categories to choose from, there is a topic for everyone.

Download the free entry pack and resources for **students** and **parents**.

We are **open for submissions** until Friday 26th April.

In celebration of International Women's Day this year there is a remarkable all-female panel including **MP Jess Phillips, news presenter Cathy Newman, and Olympian Heather Fisher.**

Submit your work (along with your name, age, and school details) by **Friday 26th April** by uploading their entry **here**. If you have any questions or would like to find out more, email **GYJA@theday.co.uk!**



Attendance for this week is summarised below

Nursery (Acorn)	88.0%	Year 3 (Pine)	89.2%
Reception (Chestnut)	97.1%	Year 4 (Alder)	97.2%
Reception (Pinecone)	99.2%	Year 4 (Yew)	98.3%
Year 1 (Holly)	91.3%	Year 5 (Oak)	95.8%
Year 1 (Ash)	97.5%	Year 5 (Beech)	91.1%
Year 2 (Sycamore)	93.8%	Year 6 (Elm)	95.8%
Year 2 (Willow)	91.7%	Year 6 (Birch)	91.3%
Year 3 (Maple)	96.8%	Whole school Cumulative from Sept	95.14%

98% - 100%	Excellent Attendance
95% - 97.9%	Good Attendance
92% - 94.9	Caution (below national)
90% - 91.9%	Cause for concern
Below 89.9%	Persistent Absence - Serious Concern

Absence Procedures

If your child is ill, please keep them at home until they are well enough to return to school. **Please notify us by phone call or email before 9.15am** if your child is to be absent, and continue to inform us on a daily basis if they continue to be ill.

We have a continual focus on attendance and punctuality and this is of the utmost importance in your child's education. Please remember that our school gate closes at 8.55am as this is when our lessons begin. Anyone arriving after this time is classed as late and will miss valuable learning opportunities which take place immediately after registration, such as phonics.

What are the risks of missing a day of school?

'Being in school is important to your child's achievement, wellbeing and wider development. Pupils with the highest attendance throughout their time in school gain the best GCSE results. The higher a pupil's attendance, the more they are likely to learn, and the better they are likely to perform in exams and formal assessments.'

The Education Hub - Department for Education

The week in Nursery

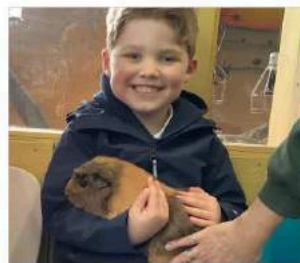
Nursery have enjoyed visiting their local environment as part of Made In the North East week. Lots of us got to try Clip N' Climb for the first time, showing great determination and resilience. We also enjoyed playing in the soft play, strengthening our gross motor skills and showing myself and Miss Azam how familiar they were with their local play area. Have a fabulous Easter.



PIC•COLLAGE

The week in Reception

Our focus in Reception for Made in the North East week has been on farming. We have learnt all about why farming is so important in the North East and how farming has changed over the years. - in EYfS we talk about past and present in our history work. The highlight of our week was undoubtedly our trip to Whitehouse Farm where we had a wonderful day. We had a tractor ride, fed lots of animals including brand new lambs, played in the soft play and we even met a huge Rainbow Python.



The week in Year 1

This week year 1 have explored the bridges of the North East for Made in the North East week. We have learnt lots of facts about the bridges on the Quayside as well as how bridges are built! Did you know that triangles are the strongest shape to use when building a bridge? We learnt that there are different types of bridges including truss, suspension and beam bridges and we even made a replica of the Tyne Bridge! We even designed a bridge for Newcastle City council using all our knowledge of bridges to make it strong and an exciting new landmark! We are very excited to explore this topic further in our trip after half term!



Miss Madderson and Miss Storey

The week in Year 2

Year 2's Made in the North-East week has focused on the topic of 'Inventions'. We began the week by discussing pictures of inventions from the North-East and asking questions and using historical knowledge to guess what they were. We also made waterwheels to understand the engineering behind them, knowing that we would see one at Cragside. We learned about Greggs and made sausage rolls as the original store opened in Gosforth in 1951. We visited Cragside to see the home of inventions and in particular, the first domestic room in the world to be lit by hydroelectricity.



This week in Year 3

This week, Year 3 have been learning about castles for Made in the North East week. We started by exploring what we already knew about castles and what we wanted to find out. Interestingly, we learned about different features which fortified castles and provided effective defence against attackers. Did you know that many castles were built on hilltops as they provided a clearer lookout for enemies? We really enjoyed redesigning a medieval town and choosing a suitable location to build a new castle. We also learnt that a range of different people lived inside castles, including lords, knights, farmers, merchants and even jesters! We had an interesting debate in groups arguing which character had the most important role inside a castle! Finally, we got to design and build our own medieval castle! Would you have wanted to live in a medieval castle during the medieval period?



The week in Year 4

This week, we have been learning about the different types of transport we have across the North East during our Made In The North East topic. We have looked at the history of Newcastle Central Station and the Airport and how these have grown over time bringing new transport opportunities to the North East. We have also considered whether traffic should or shouldn't be allowed in the centre of Newcastle - lots of us showed concern for the impact this could have on the environment. Finally, amidst the transport history, we actually went on a trip to Central Station to look at the platforms, layout and identify people in the station who could help us before getting the Metro from Central station to the airport. When arriving at the airport we could only dream of all the fabulous places we could go...



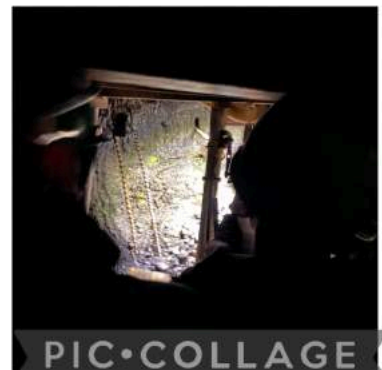
Miss Mears and Mr Orme



The week in Year 5

Made in the North East week is always a firm favourite with teachers and children; this year was no different! Our focus in Year 5 is mining and we couldn't think of a better way to learn about it than going back to the 1840s at Beamish. We were lucky enough to go down into a former working mine and also took part in a workshop about the Miners' Act 1842. Plenty of our children were happy to work down the pits despite learning so much about the horrific conditions so please feel free to give them jobs around the house over Easter!

Have an eggcellent break and we look forward to seeing you for Summer term.



Mr Tailford and Mr McCourt

The week in Year 6

This week has been all about shipbuilding in the North East - something we knew very little about at the beginning of the week, but loads by the end! We've learned about life on the Newcastle shipyards, notable ships built on the Tyne and the jobs that could be had in the industry. Our key question of 'Why are ships no longer built on the Tyne?' was answered by all of our studies and lots of us would really like to play a part in revitalising the trade. Engineers of the future!



Mrs Main and Miss Allan

Dates for your diary in 2024



15th April 2024	School Resumes
15th April 2024	Year 1 - Discovery Museum (Packed lunch required)
16th April 2024	Year 3 - Alnwick Castle (Packed lunch required)
22nd & 23rd April 2024	Year 4 Bikeability
6th May 2024	May Bank Holiday
13th - 16th May 2024	Spain Trip
W/c 27th May 2024	Half Term
3rd June 2024	School Resumes
5th June 2024	Class Photo Day (Incl Yr6 individual and Yr6 whole year group)
23rd - 27th June 2024	Yr6 France Trip

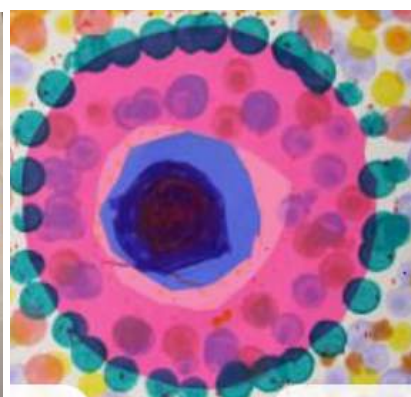
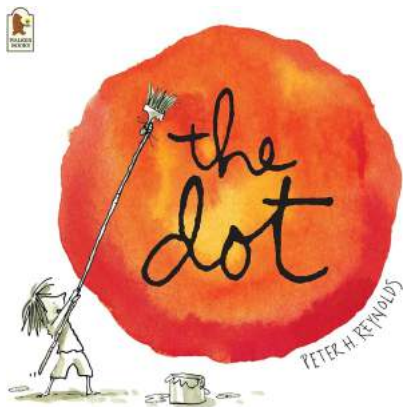
Reminder about our Whole School Art Project

April's School Value is 'Creativity' and we will be using the book, 'The Dot' by Peter H Reynolds in our assemblies. We would love the children to design their own 'dot' to go on display in the school hall, and following that, a display around school.

Look out for 'the dot' inside your child's bookbag and get creative!

We have included some ideas below to inspire you, but be as creative as you can (keeping it within the boundaries of the paper).

Please return 'the dot' to school as soon as you have finished, we would love to put up the display straight after the Easter holidays.





Ponteland United Football Club



ENGLAND
FOOTBALL



Have Fun!

LOL



The perfect way
for girls aged 5-11
to get involved
with football



TIME AND DATE

Every Saturday from 6th April to 31st August 2024 - 10:00am - 11:00am



LOCATION

Ponteland Community Primary School, Ponteland, NE20 9EY



NEXT STEPS

Email us at femalepathway@pontelandunitedfc.com or
contact our Girls Phase Lead, Darren on 07837 379447





Safeguarding at Ponteland Primary School

Ponteland Primary School is committed to keeping all children safe. Our staff regularly participate in safeguarding training and are fully aware of how to keep our pupils safe and what signs to look out for. Our pupils know they can share any concerns and we have robust policies and procedures in place which underpin safeguarding. It is our paramount priority to keep all children healthy and safe.

Our Designated Safeguarding Leads are:



Mrs Johnson (Head Teacher)
Lead DSL



Mrs Wright (Family & Behaviour
Support Adviser) Deputy DSL



Miss Dinning (Deputy Head Teacher)
Deputy DSL



Mrs Main (KS2 Lead & Y6 Teacher)
Deputy DSL

Calling all amazing parents! Join the Ponteland Primary School PTA and make a real difference in your child's education! 🎉

Are you passionate about supporting your child's school and creating a nurturing learning environment? The Ponteland PTA is seeking enthusiastic parents like you to join our incredible team! ✨

By becoming a member of the Parent-Teacher Association, you'll have the opportunity to contribute to your child's school experience in a meaningful way. With your help, we raise essential funds that go beyond the school's budget, allowing us to provide valuable resources and enhance educational opportunities. 🍎 ✨

We understand that time is precious, and every contribution matters. Whether you can spare just one hour or offer more of your valuable time, your involvement will make a tremendous impact. From organising fundraisers and social events to collaborating on exciting projects, there's a role for everyone. 💪 🤝
Here are just a few reasons why joining the PTA is a rewarding experience:

- 1 Active involvement:** Be an active participant in your child's education journey by collaborating with dedicated teachers, staff, and other passionate parents.
- 2 Making a difference:** Together, we can support the school's growth and help provide additional resources that benefit every child's learning experience. In June 2023, the PTA were able to donate a fantastic £10,000 towards the 2 new climbing frames that have been installed in the playground. More recently, we have been able to fund new football kits. And we love to hear new ideas to keep our fundraising activities fresh and interesting for everyone.
- 3 Building connections:** Forge new friendships with like-minded parents who share your commitment to education and community.
- 4 Fun and rewarding activities:** Get involved in exciting events, from school fairs and fundraisers to special projects that bring joy to the entire school community. We have the followings events coming up that you could be involved with:
Easter Events
Summer Fair
Providing refreshments at various events, for example, end of year assemblies
Pre-loved uniform (an ongoing initiative to recycle usable uniform to assist with the school's sustainability ethos)
- 5 Role modelling:** Show your child the importance of giving back and making a positive impact by actively participating in their school life.

Join us today and be part of an amazing community dedicated to empowering our children's futures! Together, we can create an extraordinary learning environment that nurtures growth and inspires success.



To express your interest or learn more about the PTA, please reach out to [✉️ pontelandpta@gmail.com](mailto:pontelandpta@gmail.com) or pass your details to school. We can't wait to welcome you!! #PontelandPTA #ParentPower

Turn your daily shopping into everyday magic for us with easyfundraising

You shop, brands donate to us. It won't cost you any extra!



 easyfundraising

Help us make a difference when you shop.
Visit www.easyfundraising.org.uk



- 1 Visit www.easyfundraising.org.uk
- 2 Sign up and search for Ponteland Primary School PTA
- 3 Your favourite brands donate between 0.5-15% to us whenever you shop with them, with no charge to you

Shop with 7,500+ brands including:

Booking.com

ebay

M&S

GROUPON



TUI

JOHN
LEWIS



Viking

ASOS



Uber Eats



PRE-LOVED SCHOOL UNIFORM



Do you have school uniform in good condition that your child no longer wears but could be worn by someone else in the school community?

Please donate your pre-loved, wearable uniform via the donation basket in reception.

Looking for uniform?

All items washed and ready to wear. Please contact pontprimaryuniform@gmail.com to let us know what you're looking for, including sizes!

Voluntary contributions to the PTA welcomed.

Money box at reception or bank transfer:

Ponteland Primary School Parent Teacher Association

20-59-61

20669059



